



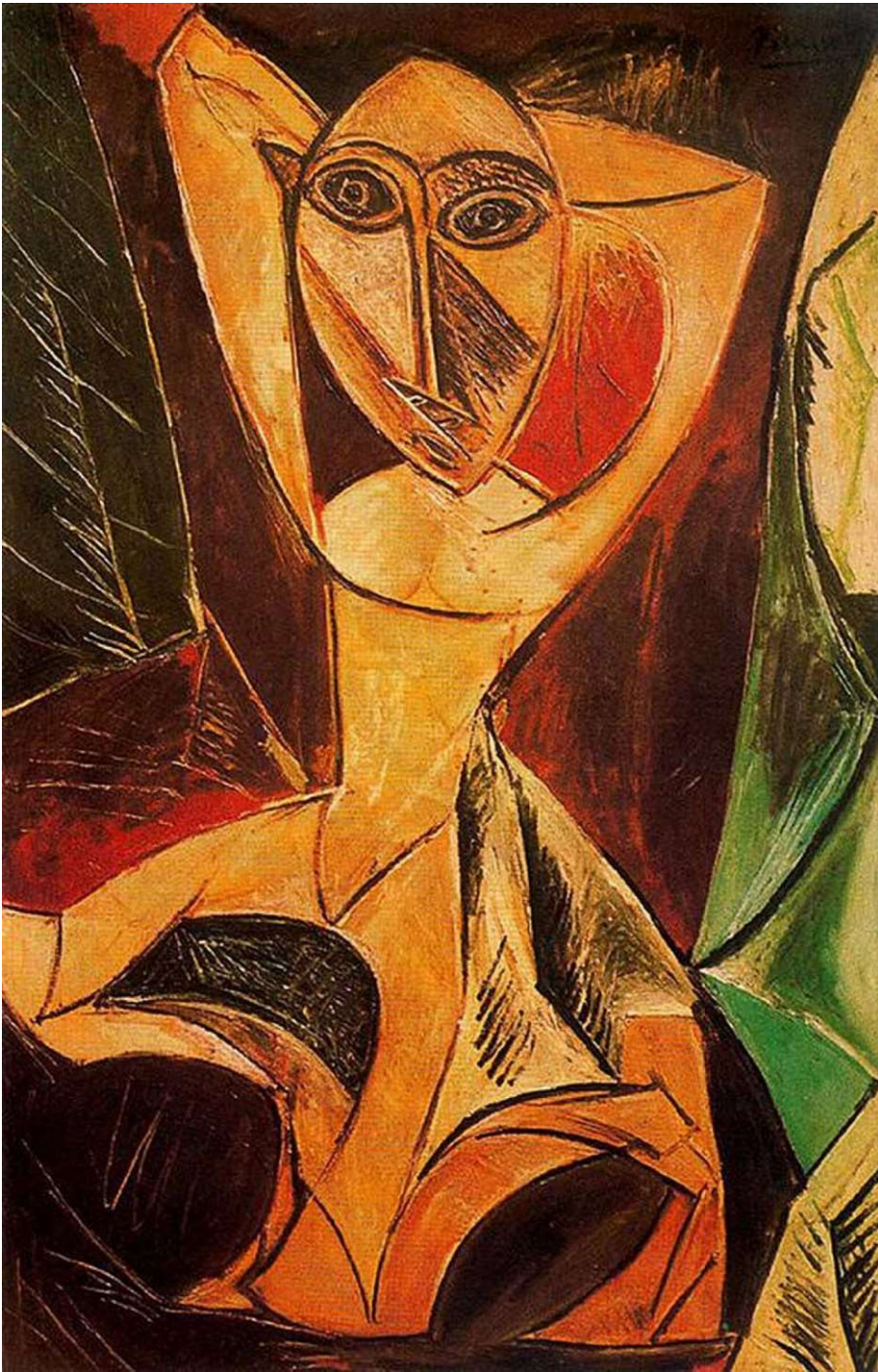
פיקאסו העלמות מאביניון 1907



Ivory Coast wood mask



Zaire Mask painted wood



Picasso nude with raised arms 1907 150.3 x100.3 cm



KOTA RELIQUARY FIGURE, Congo
Wood, copper, and brass, 57.2 cm



Mask. Grebo. Ivory Coast or Liberia. Painted wood and fiber, 25 $\frac{1}{8}$ " (64 cm) high. Musée Picasso, Paris. Formerly collection PABLO PICASSO



Pablo Picasso. *Guitar*. 1912. Sheet metal and wire, 30 $\frac{1}{2}$ x 13 $\frac{3}{4}$ x 7 $\frac{1}{8}$ " (77.5 x 35 x 19.3 cm). The Museum of Modern Art, New York, gift of the artist. For another reproduction of this work see page 304.



Baule Bo Nun Amuin Helmet
Mask, Ivory Coast



wele Antilope Mask. Gabon. 62cm. Wood, kaolien.



1913 Matisse Portrait, Painting, Oil on canvas, 146x97.7 cm



Mask Shira-Punu Gabon painted wood 31 cm



Gabon Reliquary figure wood and brass 53 cm



Brancusi 1917 Madame L.R. Wood 94 cm



Brancusi The Cock 1924 H-121 cm



Mali headdress wood 69 cm





מודליאני פסל אבן גיר גובה 65 ס"מ 1910-12



African Fang mask



Tusayan Mask



Bird-Head 1934-35
Max Ernst



Emil Nolde
Masks 1911 oil on canvas 73x77 cm



Emil Nolde
Trophy head 1911 30x18 cm
pencil and colored chalk



Trophy head Brazil
Human head, cotton and feathers
head 16 cm



Tribal African Masks Art

**Karl Schmidt-Rottluff (German, 1884–1976
Woodcut 21x16 cm 1920**



Paul Klee Intention 1938 75 x112 cm



Asmat Shield, Unir (Lorenz)
River, Irian Jaya H - 40 cm



Paul Klee 1922 Senecio
Oil Painting Reproduction on Canvas 38 x 40.5 cm

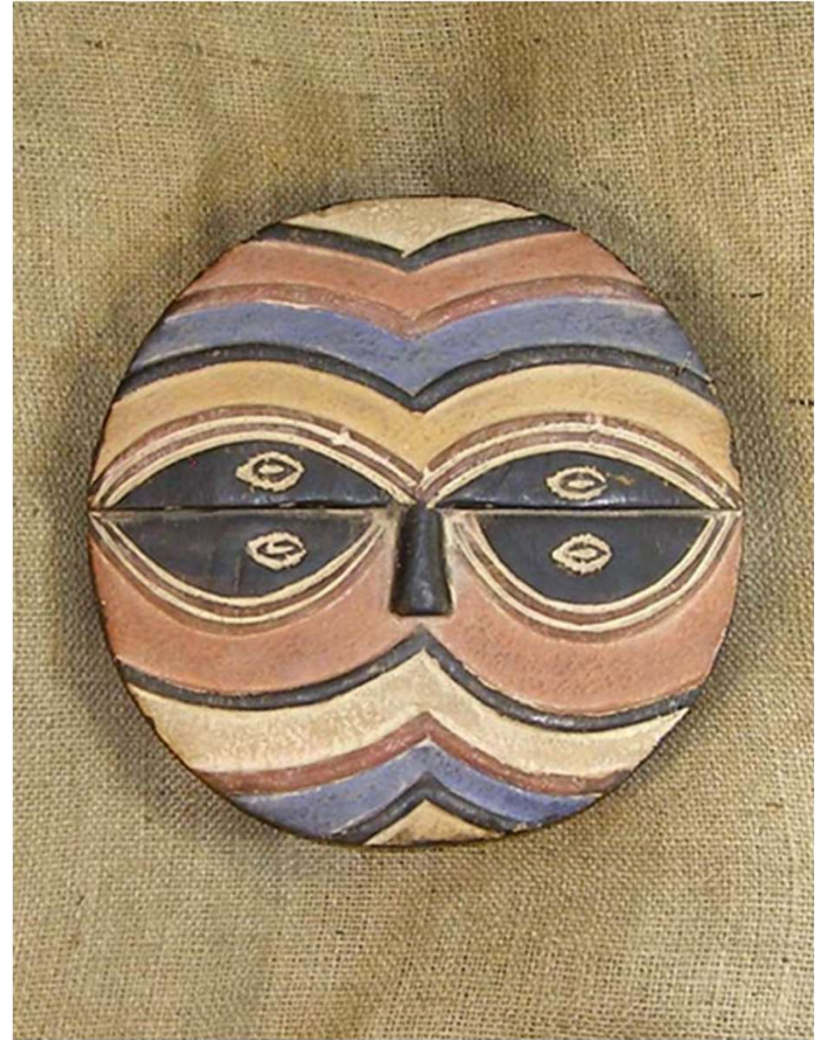


Handcrafted Sese Wood 'Betrothed'
African Wall Mask (Ghana)

COUNTRY OF ORIGIN
Congo



Teke Mask Congo



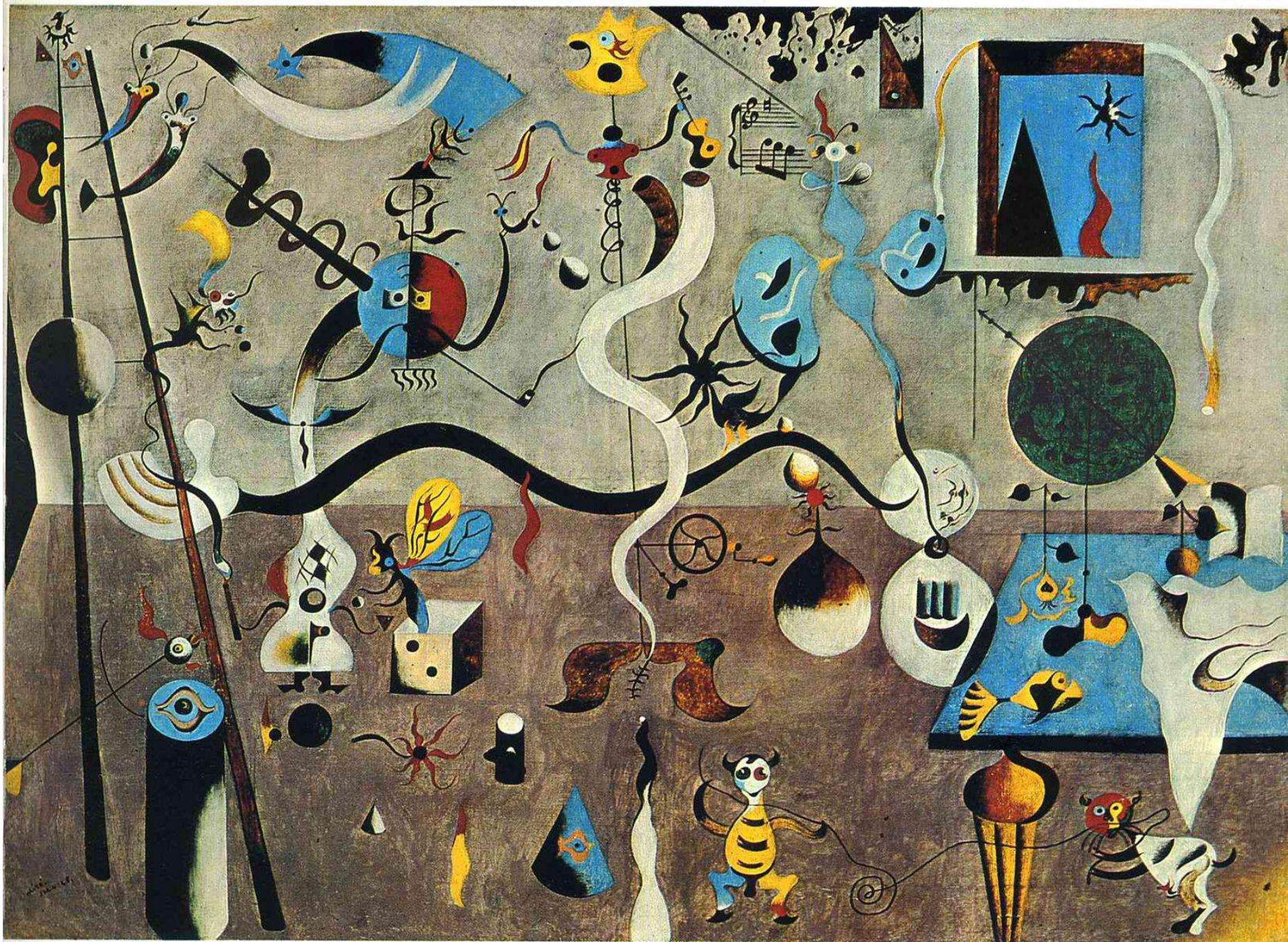
Tribal African Masks from the Teke



Actor's Mask Paul Klee 1924
United States portrait
Media: oil, canvas
Dimensions: 33.8 x 36.7 cm



Luba Kifwebe Round
African Mask - Congo



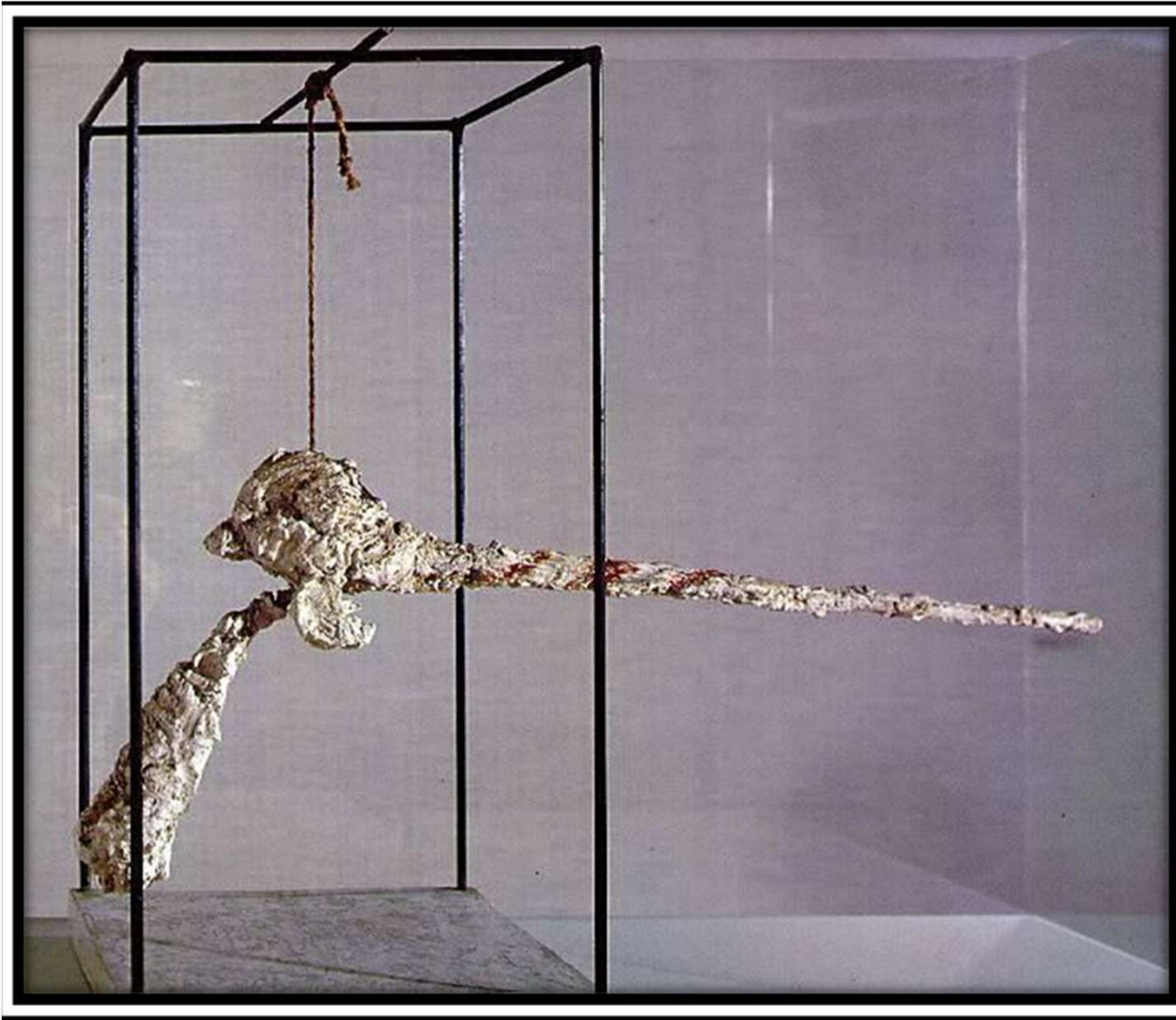
Harlequin's Carnival•
Joan Miro • 1924-1925•



Max Ernst. The King Playing with the Queen. 1944 (cast)



Lobi peoples Male figure (thilkotina) Date: 20th century Medium: Wood, pigment H - 111.3 cm



Alberto Giacometti the nose
1947 60 cm high



Helmet mask Papua New Guinea
painted bamboo 80 cm high



Alberto Giacometti 1949•
Tall Figure II Bronze 168 cm •



Woman of Venice II / Alberto Giacometti
/ 1956 / painted bronze 121.6 cm



Tanzania NYAMWEZI:
a couple of figures. h 188 cm



Henry Moore OM, CH

Moon Head

1964, cast c.1964–6

Bronze

DimensionsObject: 578 x 441 x 254





Malangan figure, 1882-83 C.E., 122 cm high, wood, vegetable fiber, pigment and shell (turbo petholatus opercula), Papua New Guinea © Trustees of the British Museum



Large Upright Internal/External Form, 1952, Kew Gardens, London,



Moore's reclining figures, such as the 1930 Reclining Woman (bottom), were influenced by Chac Mool figures, such as this one from Chichen Itza.